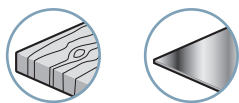




## Branch-specific applications

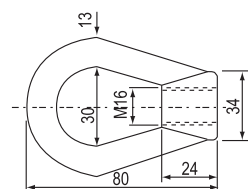


## Types of use

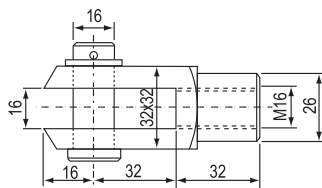


## Fittings

- 5000 An ring fitting



- 5000 Ch cap fitting



## Presentation

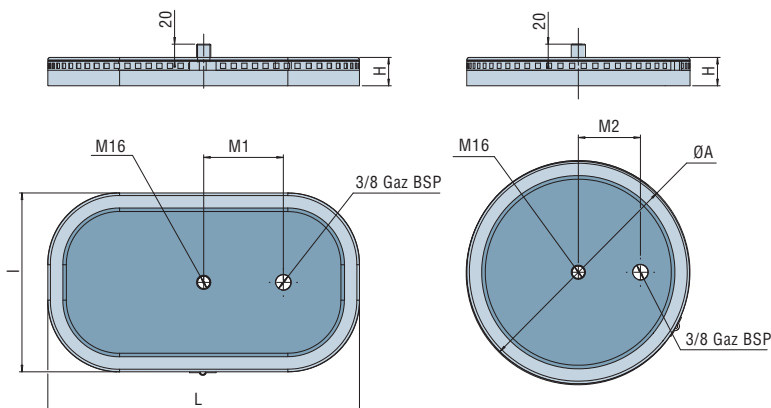
For horizontal handling of heavy loads (thick metal sheets) or objects with an uneven surface such as concrete slabs or wood, etc.

Easier maintenance; no more tricky bonding. The seal is clipped onto the metal fitting and held in place with a stainless steel wire.

## Materials

<b>Body</b>	Painted steel	<b>Ring and clip</b>	Stainless steel
<b>Foam seal</b>	Nitrile		

## Characteristics



Round suction pads				Rectangular suction pads							
	ØA (mm)	H (mm)	(N) <sup>(1)</sup>		L (mm)	I (mm)	H (mm)	M1/M2 (mm)	Con.	(N) <sup>(1)</sup>	Type of seal
VA 250	250	32	1500	VA 300	300	200	32	70	3/8G	1500	BM 2015 ELASTO
VA 280	280	32	2000	VA 330	330	220	32	70	3/8G	2000	BM 2015 ELASTO
VA 310	310	32	2500	VA 360	360	230	32	70	3/8G	2500	BM 2015 ELASTO
VA 330	330	32	3000	VA 390	390	250	32	80	3/8G	3000	BM 2015 ELASTO
VA 360	360	32	3500	VA 420	420	270	32	80	3/8G	3500	BM 2015 ELASTO

(1) Force measured at 90% vacuum including a factor of 2.

## Spare parts

- Foam seal, ref. BM 2015 ELASTO (sold by the meter)
- Stainless steel collar, ref. 095 06 108 (sold by the meter)
- Stainless steel clip, ref. 095 06 109.

on request:

- Full kit for replacement of removable seal.



## For all orders, please specify:

Round suction pad: Model + Diameter + Fitting model

<b>1: Model</b>	<b>2: Diameter</b>	<b>3: Fitting model</b>
VA	250 to 360mm	Ring 5000 An Cap 5000 Ch

Rectangular suction pad: Model + Length + Width + Fitting model

<b>1: Model</b>	<b>2: Length</b>	<b>3: Width</b>	<b>4: Fitting model</b>
VA	300 to 420mm	200 to 270mm	Ring 5000 An Cap 5000 Ch

## Option

- Spring system mounting, see page 5/3.

E.g. **VA 250 5000 An**

(VA series suction pad, diameter 250 with 5000 An ring fitting).